



# CAREER INSTITUTE BIOSCIENCE & TECHNOLOGY TRAINING PROGRAM



OUR PROGRAM

## WHAT IS THE LAB TECH PROGRAM?

This Training Program is a Missouri DHE & WD Certified 12-week comprehensive training and career program with curriculum that prepares entry-level workforce for careers in STEM.

During training, participants work closely with employers from each industry mixing both critical training and professional development components in the classroom.

Our technical, academic and experiential training helps ensure the professional development of each student and the employer need for growth in the industry!

**To Learn More Visit Us At:**

Family and Workforce Centers of America

6347 Plymouth Ave  
St. Louis, MO, 63133  
www.fwca-stl.com

Phone: 314-377-0495  
Email: vsheriff@fwca-stl.com

THE INDUSTRY >



## WHO BENEFITS?

FWCA's Bioscience & Technology Training Program assists individuals interested in the life sciences gain entry into the profession. Through our intensive, hands-on and industry-specific training program we simulate a real field-work environment.



DETAIL >

## LEADING INDUSTRY INNOVATORS

**Potential Workplaces or Industries**

- Pharmaceutical Companies
- Biotechnology Industries
- Medical Device/Chemical Manufacturers
- Hospitals/Medical Schools, R&D facilities, etc.

**Minimum Requirements**

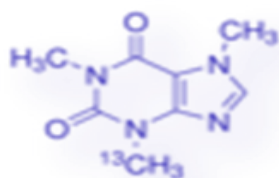
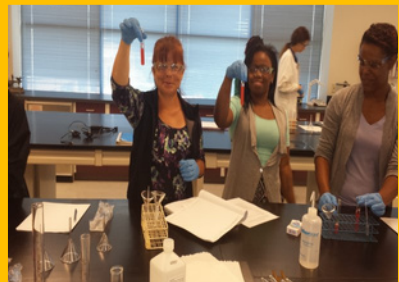
- High School Diploma or High-Set, 10-Points on TABE
- Drug & Felony Background Fee
- **Cost:** \$4,980 (includes tuition, fee & materials)



# Family and Workforce Centers of America (FWCA) Career Institute's Bioscience & Technology Training Program



**The MET Center**  
6347 Plymouth Avenue  
St. Louis, MO 63133  
Phone: 314-377-0495  
[www.fwca-stl.com](http://www.fwca-stl.com)



Caffeine-(3-methyl-<sup>13</sup>C)



**As an IACET Accredited Provider, FWCA offers IACET CEUs for its learning events that comply with the ANSI/IACET Continuing Education and Training Standard.**

## What is the BioScience & Technology Training Program?

- A DESE Certified, 12-week comprehensive scientific-based training and career tracking curriculum that focuses on preparing the entry-level workforce for careers in Science, Technology, Engineering, and Math (STEM) including biotechnology, biomedical devices, pharmaceutical, healthcare, and the food & beverage industries
- Collaborative training thru working closely with employers in each industry, developed a curriculum that addresses critical training and professional development components by incorporating specialized, technical, and hands-on training in alternative classroom environments
- An integrated targeted technical, academic and experiential training, focused career mapping/career planning and advancement support, and life skill development ensuring that both employer needs and workforce issues are appropriately addressed for the professional development of the student and the growth of the industry

## Who Benefits from this Training?

- Unemployed, underemployed, displaced workers who are high school graduates or individuals changing careers
- Individuals who desire to enter life sciences professions, but lack formal industry or academic training, associated work experience, market knowledge and career planning support to successfully acquire positions within the field
- Individuals who enjoy intensive, hands-on and industry-specific training in a simulated work environment

## Outcomes for Graduates

- Graduates qualify for positions in research and development, regulatory affairs, clinical research, business development, manufacturing within life science industries
- Participate successfully in employer-sponsored training programs
- Continue professional advancement and development through continuing education (certificate and degree programs) and career management support

## Benefits to Employers

- Reduction in screening and other pre-employment costs because life science students are work-ready
- Pool of potential workers who have broad-based industry knowledge, technical proficiency, are "trainable", and have demonstrated workplace professionalism
- Employees who are prepared to meet the demands of the industry growth and change with a positive attitude, adaptability, and mental acuity

## Potential Workplaces or Industries

- Pharmaceutical companies
- Biotechnology industries
- Medical Device/Chemical manufacturers  
Hospitals/Med Schools, R&D facilities, etc.

## Additional

## Information:

**Length of Class:** 12 Weeks

**Class times:** 8a-4p

**For the 2024 Class Schedule**

**email:** [vsherriff@fwca-stl.com](mailto:vsherriff@fwca-stl.com)

## Minimum

## Requirements:

High School Diploma or HiSet;  
GLE of 10 or higher; &  
Drug & Felony Background Free

**\$4,980 (includes tuition, fee & materials)**

## Costs:

All questions regarding payment & payment policies can be found in the Student Handbook

## Partners

Pfizer, Inc.  
KWS  
Bayer (Formally Monsanto)  
Microbe Inotech  
Mallinckrodt  
PerkinElmer  
Washington University-School of Medicine  
ITE-University of Missouri-STL  
Patheon (Formally Gallus BioPharmaceuticals)  
State of Missouri/St. Louis County/City WIBs  
St. Louis Economic Development Partnership  
Annie E. Casey Foundation  
W. K. Kellogg's Foundation  
Funded, in part, by US-SBA through BioSTL Contract  
Cortex  
CET  
Danforth Plant Science Center  
Kelly Services  
Aerotek  
G-Biosciences  
MET Center